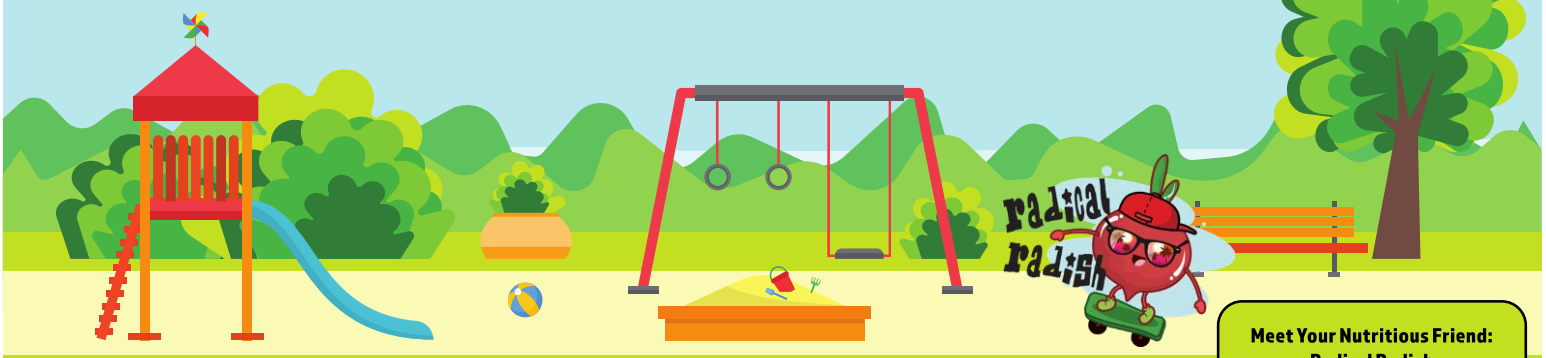


Meet Your Nutritious Friend:
Radical Radish

Monday	Tuesday	Wednesday	Thursday	Friday	Offered Daily
<p>3</p> <p>NATIONAL SCHOOL BREAKFAST WEEK</p> <p>Cheese Omelet Served with a Mini Biscuit</p> <p>Fresh Fruit & 100% Fruit Juice</p>	<p>4</p> <p>NATIONAL SCHOOL BREAKFAST WEEK</p> <p>French Toast Sticks Served with Maple Syrup</p> <p>Fresh Fruit & 100% Fruit Juice</p>	<p>5</p> <p>NATIONAL SCHOOL BREAKFAST WEEK</p> <p>Sausage, Egg, & Cheese Breakfast Burrito</p> <p>Fresh Fruit & 100% Fruit Juice</p>	<p>6</p> <p>NATIONAL SCHOOL BREAKFAST WEEK</p> <p>Pancakes & Sausage Served with Maple Syrup</p> <p>Fresh Fruit & 100% Fruit Juice</p>	<p>7</p> <p>NATIONAL SCHOOL BREAKFAST WEEK</p> <p>Sausage, Egg, & Cheese Breakfast Sandwich</p> <p>Fresh Fruit & 100% Fruit Juice</p>	<p>What is a Meal?</p> <p>You must choose at least 3 of the 4 components available for the school breakfast price.</p> <ul style="list-style-type: none"> - Choice of Whole Grain - Choice of Protein - Choice of Fruit - Choice of Milk <p>A minimum ½ cup serving of fruit or vegetable must accompany a reimbursable breakfast.</p> <p>Whole Grain Cereals Cinnamon Toast Crunch, Trix, Cocoa Puffs, Fruity Cheerios, Rice Crunch, Kix, Cheerios, Froot Loops, Frosted Flakes</p> <p>Choice of Fruit Seasonal fresh fruits, canned fruit in light syrup, 100% fruit juice</p> <p>Choice of Milk 1% white, fat-free white, & chocolate,</p> <p>(V) Vegetarian <i>These items do not contain meat, poultry, or seafood, but may contain dairy and/or egg</i></p> <p>(VG) Vegan <i>These items do not contain any animal products</i></p>
<p>10</p> <p>Whole Grain Dutch Waffle</p> <p>Fresh Fruit & 100% Fruit Juice</p>	<p>11</p> <p>Cheese Omelet Served with a Mini Bagel</p> <p>Fresh Fruit & 100% Fruit Juice</p>	<p>12</p> <p>Cinnamon Toast Crunch French Toast</p> <p>Fresh Fruit & 100% Fruit Juice</p>	<p>13</p> <p>Bacon, Egg, & Cheese Croissant Sandwich</p> <p>Fresh Fruit & 100% Fruit Juice</p>	<p>14</p> <p>Mini Blueberry Waffles</p> <p>Fresh Fruit & 100% Fruit Juice</p>	
<p>17</p> <p>Sausage, Egg, & Cheese Pizza Bagel</p> <p>Fresh Fruit & 100% Fruit Juice</p>	<p>18</p> <p>Emoji Waffle Served with Sausage & Maple Syrup</p> <p>Fresh Fruit & 100% Fruit Juice</p>	<p>19</p> <p>Cheesy Scrambled Eggs Served with a Biscuit</p> <p>Fresh Fruit & 100% Fruit Juice</p>	<p>20</p> <p>Pillsbury Apple Frudel</p> <p>Fresh Fruit & 100% Fruit Juice</p>	<p>21</p> <p>French Toast Sticks Served with Maple Syrup</p> <p>Fresh Fruit & 100% Fruit Juice</p>	
<p>24</p> <p>Blueberry Waffle Served with Maple Syrup</p> <p>Fresh Fruit & 100% Fruit Juice</p>	<p>25</p> <p>Egg, & Cheese on a Biscuit</p> <p>Fresh Fruit & 100% Fruit Juice</p>	<p>26</p> <p>Cinnamon Toast Crunch Bread</p> <p>Fresh Fruit & 100% Fruit Juice</p>	<p>27</p> <p>Sausage, Egg, & Cheese Breakfast Burrito</p> <p>Fresh Fruit & 100% Fruit Juice</p>	<p>28</p> <p>Mini Maple Pancakes</p> <p>Fresh Fruit & 100% Fruit Juice</p>	
<p>31</p> <p>Pancake & Sausage on a Stick</p> <p>Fresh Fruit & 100% Fruit Juice</p>					
<p>Your Team</p> <p>Katlyn Kirkpatrick, General Manager Tom Krulack, Assistant Manager 570-825-5588 ma1108assist@metzcorp.com ma1108@metzcorp.com</p>			<p>Meal Prices</p> <p>Student Breakfast \$0.00 Faculty Breakfast \$1.94</p>		





**Meet Your Nutritious Friend:
Radical Radish**

Monday	Tuesday	Wednesday	Thursday	Friday	Offered Daily
<p>3</p> <p>Cheeseburger on a Roll</p> <p>FEATURED VEGGIES Green Beans</p>	<p>4</p> <p>Chicken Fajita Served with Cheddar, Sour Cream & Salsa</p> <p>FEATURED VEGGIES Buttered Corn</p>	<p>5</p> <p>DR. SEUSS'S BIRTHDAY Green Eggs, & Ham Served with a Whole Grain Biscuit</p> <p>FEATURED VEGGIES Tri Tater Hash Brown</p>	<p>6</p> <p>NATIONAL OREO DAY Whole Grain Pasta with Meat Sauce</p> <p>FEATURED VEGGIES Mixed Vegetables</p>	<p>7</p> <p>French Bread Pizza</p> <p>FEATURED VEGGIES California Vegetable Blend</p>	<p>What is a Meal? You must choose at least 3 of the 5 components available for the school lunch price.</p> <ul style="list-style-type: none"> - Choice of Whole Grain - Choice of Protein - Choice of Vegetable - Choice of Fruit - Choice of Milk <p>A minimum ½ cup serving of fruit or vegetable must accompany a reimbursable lunch.</p> <p>Choice of Vegetable Hot vegetable, seasonal fresh vegetables</p> <p>Choice of Fruit Seasonal fresh fruits, canned fruit in light syrup, 100% fruit juice</p> <p>Choice of Milk 1% white, fat-free white, & chocolate,</p> <p>Daily Alternates Craveables Weekly Cold Cut Sandwiches or Wraps</p> <p>(V) Vegetarian <i>These items do not contain meat, poultry, or seafood, but may contain dairy and/or egg</i></p> <p>(VG) Vegan <i>These items do not contain any animal products</i></p>
<p>10</p> <p>NATIONAL MEATBALL DAY Asian Meatball Served with Brown Rice</p> <p>FEATURED VEGGIES Broccoli</p>	<p>11</p> <p>Walking Taco</p> <p>FEATURED VEGGIES Buttered Corn</p>	<p>12</p> <p>BBQ Rib Sandwich</p> <p>FEATURED VEGGIES Green Beans</p>	<p>13</p> <p>NATIONAL CORN DOG DAY Mini Corn Dog Nuggets</p> <p>FEATURED VEGGIES Baked Beans</p>	<p>14</p> <p>Stuffed Crust Pizza</p> <p>FEATURED VEGGIES Mixed Vegetables</p>	
<p>17</p> <p>Hot Dog on a Roll</p> <p>FEATURED VEGGIES Mini Potato Pancakes</p>	<p>18</p> <p>General Tso's Chicken Served with Brown Rice</p> <p>FEATURED VEGGIES Broccoli</p>	<p>19</p> <p>NATIONAL RAVIOLI DAY Cheese Ravioli with Marinara & Dinner Roll</p> <p>FEATURED VEGGIES Green Beans</p>	<p>20</p> <p>Chicken Nuggets Served with a Dinner Roll</p> <p>FEATURED VEGGIES Mixed Vegetables</p>	<p>21</p> <p>Mini Personal Pizza</p> <p>FEATURED VEGGIES Carrots</p>	
<p>24</p> <p>Potato & Cheese Pierogi with Butter</p> <p>FEATURED VEGGIES Broccoli</p>	<p>25</p> <p>NATIONAL CRUNCHY TACO DAY Crunchy Beef Tacos</p> <p>FEATURED VEGGIES Buttered Corn</p>	<p>26</p> <p>Meatloaf Served with Mashed Potato & Gravy</p> <p>FEATURED VEGGIES Mixed Vegetable</p>	<p>27</p> <p>Hot Ham & Cheese Served on a Pretzel Roll Turkey & Cheese on a Roll</p> <p>FEATURED VEGGIES Green Beans</p>	<p>28</p> <p>Italian Dunkers Served with Marinara Sauce for Dippin'</p> <p>FEATURED VEGGIES Carrots</p>	
<p>31</p> <p>Popcorn Chicken Served with a Dinner Roll</p> <p>FEATURED VEGGIES Seasoned Peas</p>					
<p>Your Team Katlyn Kirkpatrick, General Manager 570-825-5588 ma1108@metzcorp.com Tom Krulack, Assistant Manager ma1108assist@metzcorp.com</p>			<p>Meal Prices Student Lunch \$0.00 Faculty Lunch \$4.73</p>		

Menu subject to change due to product availability. This institution is an equal opportunity provider and employer.

